

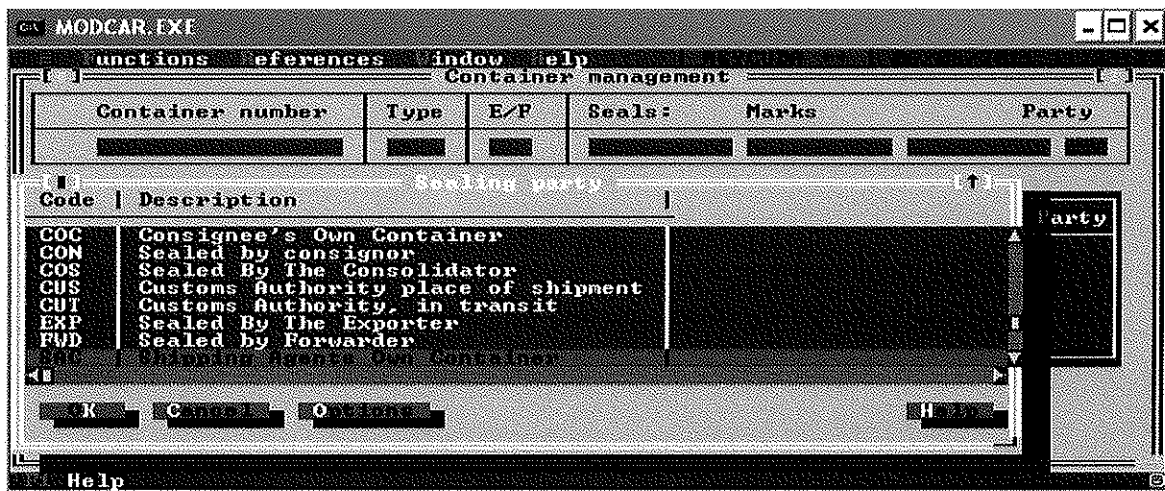


**FIJI REVENUE AND CUSTOMS AUTHORITY
PUBLIC CIRCULAR NO.07/2011**

In a bid to effectively control container movements and disposals in Fiji, all Shipping Lines, Shipping Agents and Freight Forwarders are to identify container ownership prior to manifest registration using any of the three codes below;

- ‘SOC’: SHIPPERS OWN CONTAINER**
- ‘COC’: CONSIGNEE OWN CONTAINER**
- ‘SAC’: SHIPPING AGENTS OWN CONTAINER.**

Codes will be entered on Container Management, ‘SEAL PARTY’ field.



Any queries on this should, in the first instance, be directed to the Managers at our ports of entry. Further queries may be referred to the ASYCUDA reps. at Suva, Lautoka and Nadi for clarification.

[Jitoko Tikolevu]
Chief Executive Officer
FIJI REVENUE AND CUSTOMS AUTHORITY

28th July, 2011